



Bibby Turboflex®
Altra Industrial Motion

Marland Clutch®
Altra Industrial Motion

Formsprag Clutch®
Altra Industrial Motion



Ameridrives®
Altra Industrial Motion

Stieber®
Altra Industrial Motion



NG
NOVUS GEAR

Distributors for

Altra®
Motion

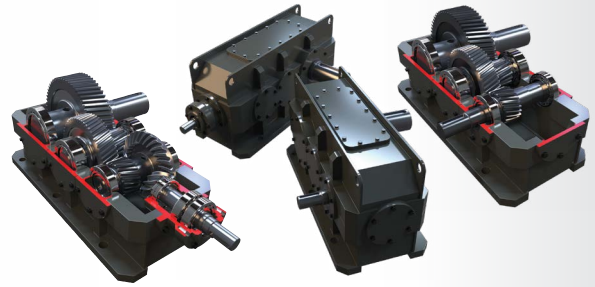


Specialists in Power Transmission and Gearbox Repair

Novus Gear

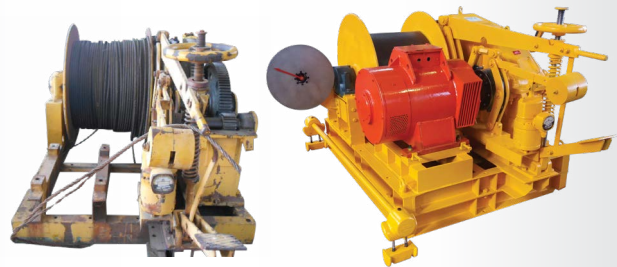
New Industrial Gear Units

Novus Gear has the ability to design and manufacture industrial gear units. Components are 100% locally manufactured. These units are designed to industry accepted design standards. Design and manufacturing are done in-house. Complete drive pack assembly is done in our facility.



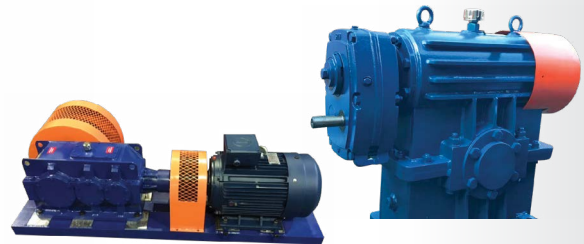
Refurbishment of Industrial Gear units

Novus Gear also specialises in the refurbishment of many types and configurations of industrial gear boxes, such as spiral bevel helical units, helical units and worm gear units. Reverse engineering, to design standards, makes it possible to maintain or improve performance.



Drop in / custom built, Gear Units

Drop-in replacements are designed and manufactured locally. The benefit of a drop-in replacement unit is that the customer does not need to make any changes to their plant. Novus Gear will design and manufacture an exact replica or a unit that will have the exact foot print, dimensions and performance. We cover many types of gearboxes: worm, helical and bevel helical units.



Benefits of the NOVUS GEAR Solution

- We manufacture our products locally which means more flexibility with lead times, stock holding and after sales service.
- Our products are manufactured according to the ISO9001 Quality System and have full traceability.
- We provide turnkey solutions from the application design stage through to product delivery and commissioning.
- The NOVUS GEAR solution comes with a wealth of power transmission experience and the product design is based on a combination of tried and tested engineering principals.
- Customized maintenance service packages for all NOVUS GEAR units are available.
- Only premium brand bearings are used in the NOVUS GEAR units.
- 12 Month conditional warranties apply.

Standard NOVUS GEAR sizes for conveyor applications:

Available gearbox ratios from 16/1 to 40/1. Power ranges from 30kW to 650kW installed.

Some of the many advantages of NOVUS GEAR include:

- Other ratios and sizes are available on request.
- Forced cooling such as fans, oil-to-air and oil-to-water systems.
- In-house base plate and guard design.
- Variety of input and output coupling options in line with client requirements.



Motion Control and Power Transmission Solutions

Altra is a premier global designer and producer of a wide range of motion control and power transmission solutions. With engineered components and systems that provide the essential control of equipment speed, torque, positioning, and other functions, Altra products can be used in nearly any machine, process or application involving motion. Our well-established businesses are recognized leaders serving a diverse range of demanding specialty niche markets, including sectors within robotics, medical, factory automation and energy to name a few. The common link across the many industries we serve is our ability to provide innovative solutions that solve challenging customer problems.

Altra's products are marketed under a variety of well recognized and established brands, including: Ameridrives, Bauer Gear Motor, Bibby Turboflex, Boston Gear, Delroyd Worm Gear, Formsprag Clutch, Guardian Couplings, Huco, Industrial Clutch, Inertia Dynamics, Jacobs Vehicle Systems, Kilian, Kollmorgen, Lamiflex Couplings, Marland Clutch, Matrix, Nuttall Gear, Portescap, Stieber, Svendborg Brakes, Thomson, TB Wood's, Twiflex, Warner Electric, Warner Linear and Wichita Clutch.

Our diverse product offering includes clutches & brakes, precision motors, automation solutions, linear systems, engineered gear drives, and various mechanical and electrical components.

With sales, service, and manufacturing facilities in more than 20 different nations across five continents, combined with industry leading distribution channels, our expanding global presence allows us to provide exceptional customer service and support worldwide.



Since 1917, with the introduction of the resilient grid coupling, Bibby Turboflex has been recognized as a global leader in the design and manufacture of highly-engineered industrial couplings. Bibby develops reliable and safe power transmission solutions that eliminate downtime and optimize efficiency.



Ameridrives began manufacturing in 1928. Through the years, Ameridrives has become a pioneer and global leader in advanced coupling technologies. Ameridrives offers a wide range of products including Amerigear gear couplings and mill spindles.





Founded in 1931, Marland Clutch has grown to become a global leader in the design and manufacturing of backstopping and overrunning clutches

BC Model Backstops | Marland Clutch

These extremely reliable roller style, bearing supported backstops provide positive protection against potentially dangerous and damaging reverse torque runaways of inclined conveyors.



For more than 75 years Formsprag Clutch has been known as the world's leading authority for the design and manufacture of long-life overrunning clutches, backstops, bi-directional clutches and clutch couplings. Formsprag offers the broadest range of both sprag and ramp & roller type overrunning clutches and backstops available globally.





Stieber, with more than 75 years of experience, is a global leader in the research, development and production of high-precision freewheels and backstops. Stieber offers a wide range of products including overrunning clutches.



NOVUS GEAR

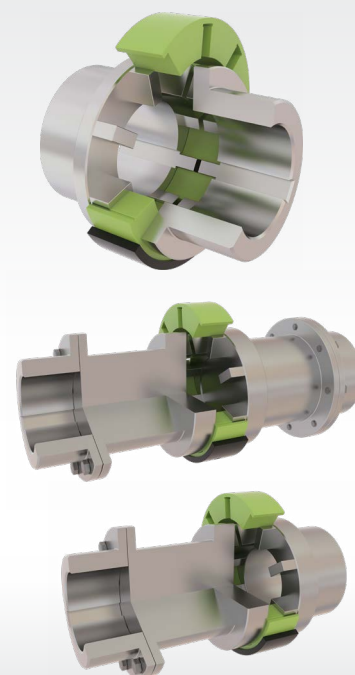
N-WRAP COUPLINGS

Novus Gear N-Wrap Couplings are designed to allow for quick and easy element replacement. Removal of hubs or the realignment of motors or drives is not required, which in turn reduces overall downtime. Advanced production methods and innovative material selection allows for a higher capacity at a more competitive price.

Novus Gear N-Wrap Couplings are non-lubricated and are designed from flexible urethane. The lack of need for lubrication decreases recurrent maintenance costs. Available in both close-coupled and spacer designs, Urethane Flexible Couplings accommodate shaft diameters up to 186mm and torque loads up to 15,028 Nm.

The urethane element has excellent resistance to wear and chemicals, and can be operated between temperatures of -40°C to 95°C.

The compact design of this coupling eliminates that need for coupling guard redesign for specific applications.





WESTCAR S.R.L. FLUID AND FLEXIBLE COUPLINGS

The CA hydraulic coupling with annular delay chamber, in addition to maintaining the numerous advantages of the Rotofluid hydraulic couplings, thanks to its constructive shape (large delay chamber and annular chamber), has as main characteristics: Starting systems with great inertia considerably reduce the engine torque during starting, considerably limit the current absorbed when starting the machine.

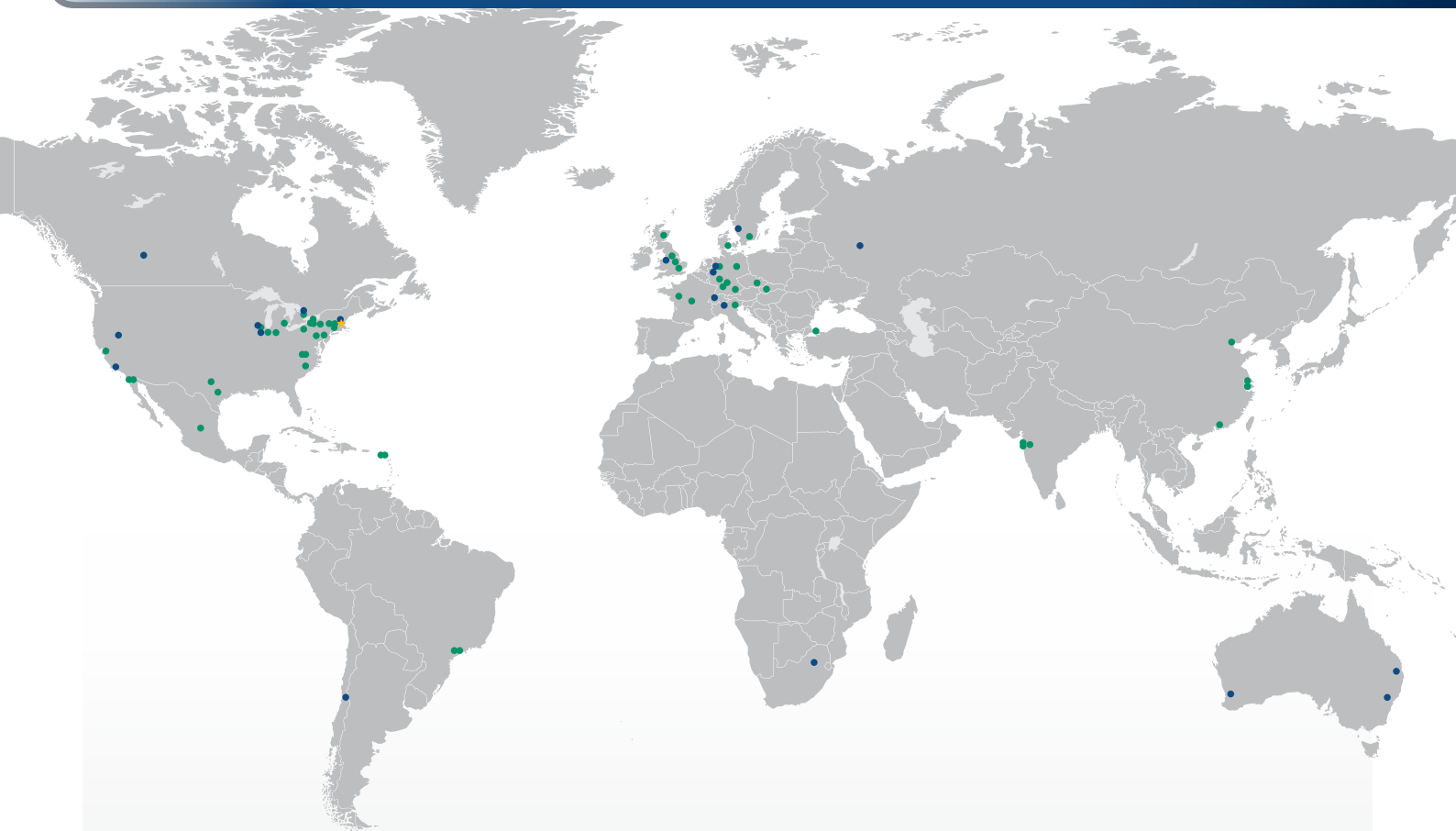


NOVUS *FLEX COUPLINGS*

The Novus flex coupling is a maintenance free “fit and forget” coupling. The rubber in compression design allows for a fail safe operation, control of resonant vibration, severe shock load protection, misalignment capabilities as well as zero backlash elimination of torque amplification factor through pre -compression of the rubber elements.

Multiple designs from shaft to shaft, flywheel to shaft or spacer and cardan shaft arrangements are available. The RB range for general purpose applications has a maximum torque capability of 41 kNm. The PM range is for heavy duty applications and has a maximum torque capability of 6000 kNm.





A Global Footprint to
Support Customers
Around the World

★ Altra Headquarters

● Altra Engineering & Service Centres

● Altra Manufacturing Facilities

- Total coverage in over 70 countries
- 53 manufacturing locations worldwide
- Over 400 direct sales experts and 600 product & software engineers

NOVUS GEAR and our partners embrace the challenges of day to day plant reliability and undertake to be available to all our customers on a 24/7 basis.

